

K2 + T2 wireless remote CCT controller



CE FC RoHS (FCC ID: 2APBAT1)

Technical Specs:

K2: CCT Panel

- Input Voltage : DC12V-24V
- Load Current : 4A*2CH MAX 8A
- Optional output frequency : 0.5K, 1K, 2K, 4K, 8K
- Grey Scale Level : 2048 Levels*2
- Max Output Power : 96W(12V)\192W(24V)
- Working Temperature : -20°C ~ 55°C
- Dimensions : L86*W86*H51 (mm)
- Weight(N.W) : 130g

Wireless Remote(T2)

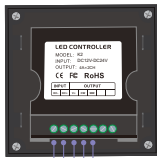
- Input Voltage : 3V(CR2032)
- Working Frequency : 433.92MHZ
- Remote Distance : 30M
- Working Temperature : -20°C ~ 55°C
- Dimensions : L106*W56*H9(mm)
- Weight(N.W) : 40g

— 1 —

Notice:

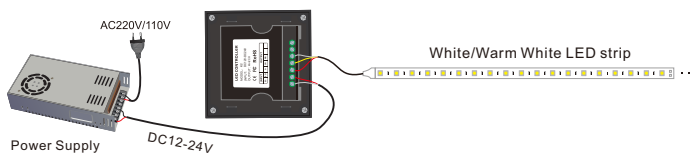
1. The digital tube is inactive if no settings are made after 1 minute, does not affect the output effect. re-operate the rotary to turn it on.
2. Restore factory defaults: In the state of power off, long press the rotary and power on, after 0.5 second, release the rotary, the controller is on. after restoring factory defaults, the K series controller and the remote need to rematch the ID.

Green Block:



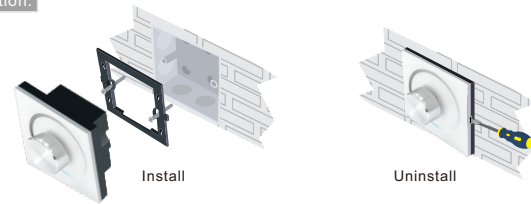
Power input Socket LED lamp Connected Socket

Wiring Diagram:



— 3 —

Installation:



Rotary Functions:

Rotary Function :

The Learning ID Method of Remote Control: Remote control has been matched to the receiver before delivery, if deleted accidentally, you can learn ID as follow.

Learning ID: In the state of power off, long press rotary for 3 seconds, when the digital tube displays 'FF', then press any key on the remote control. The digital tube flashes 3 times, and the controller is ON, the remote and is controller is matched.

Note:

The controller only matches to the same type remote control, the controller is inactive if no settings are made to it after 1 minute, press any key to turn it on before normal operation.

K2: CCT Panel



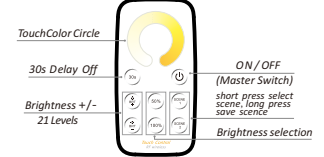
※ Short press: turn on/off LED controller

※ Long press: in the state of power on, long press to select the output frequency, F0.5=0.5K, F1.0=1.0K, F2.0=2.0K, F4.0=4.0K, F8.0=8.0K.

※ Double-click: switch between CCT mode and Dimming mode.

※ Adjust rotary: in dimming mode, increase or decrease brightness, range from 1~100; in CCT mode, adjust the color temperature, range from C0-C32.

T2: NW-WW CCT



— 2 —

After-Sales:

From the day you purchase our products within 3 years, if being used properly in accordance with the instruction, and quality problems occur, we provide free repair or replacement services except the following cases:

- 1.Any defects caused by wrong operations.
- 2.Any damages caused by inappropriate power supply or abnormal voltage.
- 3.Any damages caused by unauthorized removal, maintenance, modifying circuit, incorrect connections and replacing chips.
- 4.Any damages due to transportation, breaking, flooded water after the purchase.
- 5.Any damages caused by earthquake, fire, flood, lightning strike etc force majeure of natural disasters.
- 6.Any damages caused by negligence, inappropriate storing at high temperature and humidity environment or near harmful chemicals.
- 7.Product has been updated.

Kindly Reminder:

1.Power Source Selection

Power source must be DC constant voltage type of power supply. Due to the efficient output in some power supplies are only 80% of total, so please select at least 20% higher output power supply than the consumption of LED lights.

— 4 —